

# REVOLUTIONARY ON-CAMERA CONTINUOUS LED LIGHT WITH HSS FLASH



*"NEO 2 is a game-changer. You'll never miss a shot. There's no recycle time, no light loss, no power loss"*

- Jason Lanier, Sony Artisan of Imagery



DESIGNED FOR PORTRAIT/LOCATION PHOTO & VIDEO • HIGH SPEED SYNC FLASH (1/8000TH), NO RECYCLE TIME  
ADJUSTABLE COLOUR (6300-3150K), CRI >96 • BUILT IN ELINCHROM SKYPORT FLASH RECEIVER (200M)  
POWERFUL SOFT OUTPUT, 85% BRIGHTER THAN NEO 1 • CINESFX™ FOR CUSTOM LIGHTING FX (FIRE, LIGHTNING, TV)  
POWER BY 6 xAA, DC / DTAP, MOUNT ON OR OFF CAMERA • TRUE APERTURE DIMMING™ & DESIGNER FADE™ MODES

▶ [YOUTUBE.COM/ROTOLIGHT](https://www.youtube.com/rotolight)

▶ [INSTAGRAM.COM/ROTOLIGHT](https://www.instagram.com/rotolight)

▶ [FACEBOOK.COM/ROTOLIGHTUK](https://www.facebook.com/rotolightuk)

▶ [TWITTER.COM/ROTOLIGHT](https://twitter.com/rotolight)

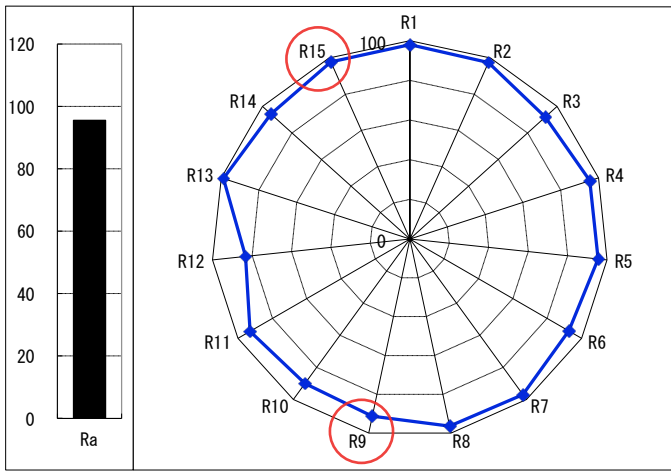
+44 (0)1753 422 750

Available from:  
**WWW.ROTOLIGHT.COM**

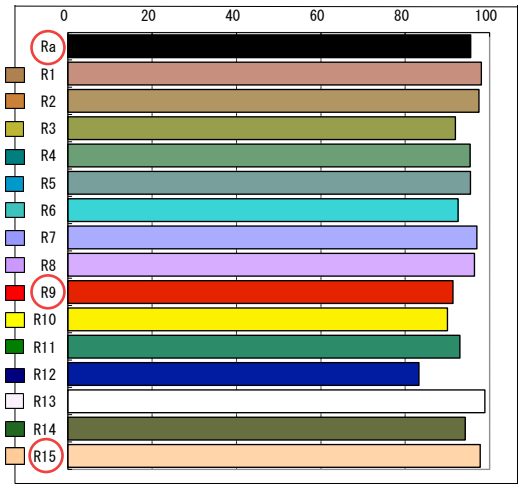
MADE AT PINWOOD STUDIOS, UK

[sales@rotolight.com](mailto:sales@rotolight.com)

# CRI TEST



**CRI 96**



x	y	Top(JIS)	duv(JIS)	Peak Wavelength	Ra	R1	R2	R3	R4	R5	R6	R7	R8	R9	R10	R11	R12	R13	R14	R15
0.3890	0.3685	3700	-0.0063	456	96	98	97	92	95	95	93	97	96	91	90	93	83	99	94	98

## TECHNICAL SPECIFICATION

ROTOLIGHT NEO 2	
BEAM ANGLE	50 Degree
TLCI (Television Lighting Consistency Index)	91 Approved for live broadcast without correction.
OVERALL CRI (Ra) SKINTONE CRI (R15)	CRI => 96 (Skintone R15, CRI=98)
POWER CONSUMPTION @100% OUTPUT	12 Watts @100% Output 15 V DC
LUX at 3FT(0.9m) *F-STOP at ISO 200/400/800	2000 f8.0 / f11.0 / f16
LUX at 6FT(1.82m) *F-STOP at ISO 200/400/800	510 f4.0 / f5.6 / f8.0
LUX at 9FT(2.74m) *F-STOP at ISO 200/400/800	227 f2.8 / f4.0 / f5.6
CONTROL	Local or Skyport wireless, with Dynamic Drift Compensation and Thermal Monitoring
WEIGHT	354g (body only) 504g inc inc 6xAA
DIMENSIONS	Diameter 145mm (5.7") x Depth 50mm (1.96")
MOUNTING	Integral 1/4" - 20 tripod mounts, with Hot Shoe Adapter
PEAK OUTPUT	2000 Lux at 3ft (measured at midpoint of 4110 Lux)
LUMINOUS FLUX	1032 Lumens
COLOUR RANGE	3150K-6300K
INCLUDED FILTERS	216 - Full Diffuser, 250 - Half Diffuser 184 - Cosmetic peach Skin Tone 279 - 1/8 Magenta
BATTERY LIFE	85,000 flashes or 2 Hours (Continuous Mode)
Max Shutter Sync Speed Flash Duration at Max Power	1/8000th Adjustable from 1/50th - 1/1000th

\* F-Stop measured using PSU in Flash Mode at 4110K, 1/60th Shutter Speed (AA Battery Mode 1-stop less bright)

PHOTOMETRICS	LED Angle	3 ft. / 0.9m	6 ft. / 1.82m	9 ft. / 2.74m
NEO (at mid point 4110K)	50°	194fc 2000 lx	49fc 510 lx	21fc 227 lx

## ROTOLIGHT NEO 3 LIGHT KIT



## TESTIMONIALS

"NEO 2 is a game-changer. You'll never miss a shot. There's no recycle time, no light loss, no power loss"

Jason Lanier - Sony Artisan of imagery

"NEO 2 - My new go-to choice of lighting"  
"There isn't a job I wouldn't take it on"

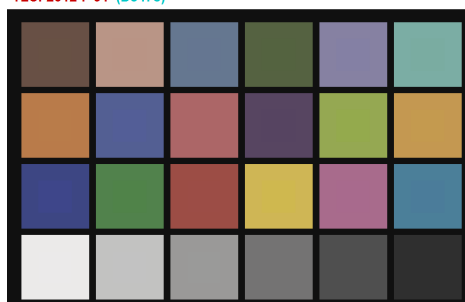
Stefan Lange - Visual FX Veteran (Batman, James Bond, Spectre & Tomb Raider)

## ROTOLIGHT LED TLCI TEST RESULT

Rotolight LED(5600): CCT = D5478 ( -2.1 )

TLCI-2012 : 91 (D5478)

EBU : TLCI-2012  
Alan Roberts - Oc



Sector	Lightness	Chroma	Hue
R	0	0	0
R/Y	0	0	-
Y	0	0	-
Y/G	0	0	-
G	0	0	0
G/C	0	0	+
C	+	0	0
C/B	+	0	---
B	0	0	0
B/M	0	0	0
M	0	0	0
M/R	0	0	0

